

Module 3: Fluorescence Optical Microscope

Contents

1	Objectives and Learning Goals	2
2	Roadmap and Milestones	2
3	Microscope Construction	3
3.1	Major microscope parts	3
3.1.1	Optical “Legos”	3
3.1.2	Simple lenses	3
3.1.3	Objective lenses	4
3.1.4	Sample holder/stage	4
3.1.5	Fluorescence illumination	4
3.1.6	Dichroic mirror and barrier filter	5
3.1.7	CCD camera	6
3.2	Construction guidelines	6
3.2.1	White light microscope	6
3.2.2	Fluorescence microscope	7
4	Experiment 1: Microscope Characterization and Fourier-Plane Imaging	8
4.1	White light calibration	8
4.2	Fluorescence characterization and imaging	8
4.3	Fourier optics	8
4.3.1	The “light-scattering microscope”	8
4.3.2	Bio-photonic crystals	10
5	Experiment 2: Microrheology Measurements by Particle Tracking	11
5.1	Introduction and background	11
5.2	Experimental details	12
5.2.1	Stability and setup	12
5.2.2	System verification	13
5.2.3	Live cell measurements	13
6	Experiment 3: Fluorescence Imaging of the Actin Cytoskeleton	15
6.1	Cell fixation and labeling protocol	15
6.2	Actin imaging	16
7	Report Requirements	17
7.1	Microscope construction	17
7.2	Experiment 1: microscope characterization and Fourier-plane imaging	17
7.3	Experiment 2: microrheology measurements by particle tracking	17
7.4	Experiment 3: fluorescence imaging of the actin cytoskeleton	17

1 Objectives and Learning Goals

- Become familiar with the optical "Lego" block set.
- Construct a fluorescence and white light microscope.
- Understand Fourier optics and its implications in microscopy.
- Become familiar with basic cell labeling procedures using fluorescent probes.
- Understand microrheology measurements in cells.

This laboratory sequence is three weeks long. At the end, you will have constructed and characterized a working fluorescence microscope. You will understand basic optical principles such as ray tracing, fluorescence detection, and resolution. You will have also applied this microscope to characterize a bio-photonic crystal, and to measure the mechanical properties of living cells.

2 Roadmap and Milestones

The AFM will be the basis of three weeks' worth of experiments, and the roadmap below is subdivided into weeks to help you gauge your progress.

Week 1:

1. Design and Build an inverted white light microscope based on ray tracing.
2. Measure the magnification and field of view using an air force target and a Ronchi ruling with bright-field white light illumination.
3. Add a laser illumination beam path.
4. Measure the diffraction of a Ronchi ruling in the Fourier plane.
5. Measure the diffraction pattern of a peacock feather and a piece of tissue paper.

Week 2:

1. Use the fluorescence microscope to track endocytosed beads in NIH 3T3 fibroblast cells.
2. Use MATLAB to extract the storage modulus and the loss modulus of the cell.
3. Add cytochalasin D and repeat the modulus measurements to determine its effects on cell microrheology.

Week 3:

1. Learn how to fix NIH 3T3 fibroblasts and label their actin cytoskeleton.
2. Image the labeled F-actin with your fluorescence microscope.
3. Repeat imaging using cells treated with cytochalasin D to directly visualize the drug's effect on the cytoskeleton.

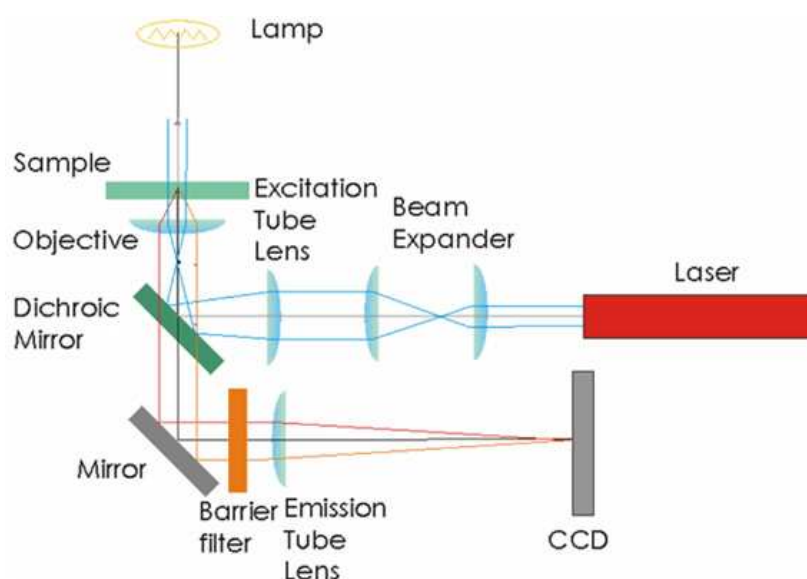


Figure 1: Rough schematic showing white light and fluorescence light paths for imaging the specimen plane. Not drawn to scale.

3 Microscope Construction

To start, familiarize yourself with the optomechanical components that you will use as the building blocks for optical construction. Figure 1 provides a general scheme for the microscope geometry, but you will not be provided with a detailed schematic for how to put everything together. You are on your own! Spend some time on trial-and-error exploration.

It's worth noting that making an effort from the very start to build a high-quality, stable, carefully measured setup will pay off tremendously when doing your experiments.

3.1 Major microscope parts

3.1.1 Optical “Legos”

The main framework for these microscopes is the ThorLabs SM1 lens tube system, and related components. You will quickly figure out how most of these parts fit together. Be sure in particular you understand the use of the cage cubes, the optic mounts that go into them, the corresponding kinematic mounting plates, and the quick-connect linkages. Your instructor can review with you any components you're not sure about.

3.1.2 Simple lenses

Plano-convex spherical lenses are available for our microscopes in four focal lengths $f = 25, 50, 100,$ and 200 mm. Mount them inside lens tubes and secure with a retaining ring. Typically, the convex side of the lens faces toward the collimated beam (all rays parallel), and the planar side toward the convergent rays.

As you install lenses into your microscope, **label their focal lengths on the lens tubes.** This will help you remember what you did when building, and will aid in disassembly and storage afterward. Likewise, save the lens storage boxes. We have a large number of lenses, and some are difficult to identify when they are not labeled.

Handle lenses as little as possible, and only by the edges. If a lens is dirty, clean it by wiping with a folded piece of lens paper wetted with a few drops of methanol (leaves no residue), held in a hemostat. Ask an instructor to show you the technique.

3.1.3 Objective lenses

These are specialized lenses that are the workhorses of a microscope. They are designed with great effort (and often great expense) by the microscope manufacturers to have excellent optical characteristics, low chromatic and geometric aberrations, and interchangeability. They are typically swapped in and out to set the overall magnification – in a commercial microscope this is done mechanically and sometimes automatically; we will do it manually.

For the 20.309 scopes, we have three objective lens options: a 10 \times , a 40 \times , and a 100 \times . They are referred to by their nominal magnification, which assumes they are used with a 200 mm tube lens (which is how a commercial Nikon scope is built). We have adapter rings available that connect the objective lens mounting threads to be SM1 lens tube system.

Three important things to note:

- Objectives don't have an indicated focal distance; instead, their back focal plane (BFP) is designed to coincide with the rear of the objective housing. This is equivalent to the focal location of a "normal" lens – ask a lab instructor if you're unsure where this is.

- Another key parameter used to describe these lenses is the *working distance* (WD). This is the distance between the front end of the objective and the sample plane (when the sample is in focus). Generally, the higher the magnification, the lower the working distance.

- The 100 \times objective is designed to be used with immersion oil, which provides an optical medium of predetermined refractive index ($n = 1.5$). When using the 100 \times , place a drop of oil on it, and bring the drop in contact with the slide cover glass. After use, clean off excess oil by wicking it away with lens paper (don't do a lot of rubbing). The 10 \times and 40 \times don't use oil.



Figure 2: A typical Nikon objective lens.

3.1.4 Sample holder/stage

The purpose of this component is to stably support the sample above the objective lens, and to enable fine control for moving the sample in the x-y plane. Reliable translational control will be very important especially at 40 \times or 100 \times magnification. Build the sample holder using a component that allows x- and y-axis planar movement, and clamp it to a post.

3.1.5 Fluorescence illumination

We'll illuminate the fluorescent molecules of our scope using a $\lambda=532$ nm 5 mW green laser pointer (see also Sections 3.1.6 and 3.2.2). ***DO NOT begin working with the laser in this section until you're familiar with laser safety procedures!*** Use caution, because this laser *can* damage your eyes.

Laser Safety

Your lab instructor will provide a laser safety introduction before you start working.

Two major safety policies we need to follow for EHS compliance:

1. Wear the provided safety eyewear **at all times**, even when your laser is not on, since other groups may be running theirs.
2. Whenever you working with the lasers, turn on the laser warning light switch by the door to the lab, and make sure the warning sign is flashing.

Additional common-sense practices to keep in mind:

- Under no circumstances should you point the laser toward other people.
- In the configuration used here, laser light will emerge out of the top of the objective lens: do not put your face directly above the objective.

Beam expansion

The green light is collimated coming out of the laser pointer, and should also be collimated when it strikes the sample (this is called Köhler illumination). However, the green light should cover a good portion of the field of view of your microscope, and the beam may not be wide enough emerging from the pointer. This means that the laser beam will need to be expanded. What expansion factor should you use for a 40 \times objective? You may want to be a bit conservative with beam expansion, since the laser pointer is not too powerful and overexpansion will decrease the light intensity at the sample and may not give you enough power for imaging.

Another simple 4-f system is useful here (in this instance the intermediate focal points must coincide).

3.1.6 Dichroic mirror and barrier filter

The fluorophores we will fluoresce (emit) in the orange-red region of the visible spectrum (550-600 nm). As mentioned, we'll excite these molecules using a 532 nm green laser pointer.

In any fluorescence system, a key concern is viewing only the emitted fluorescence photons, and eliminating any background light, especially from the illumination source.

We have two pieces of optics to help us do this. Take a look at Figure 1 for the roles they play in the microscope layout. Note that the barrier filter is key for high-sensitivity fluorescence imaging, and will not significantly impact white-light imaging.

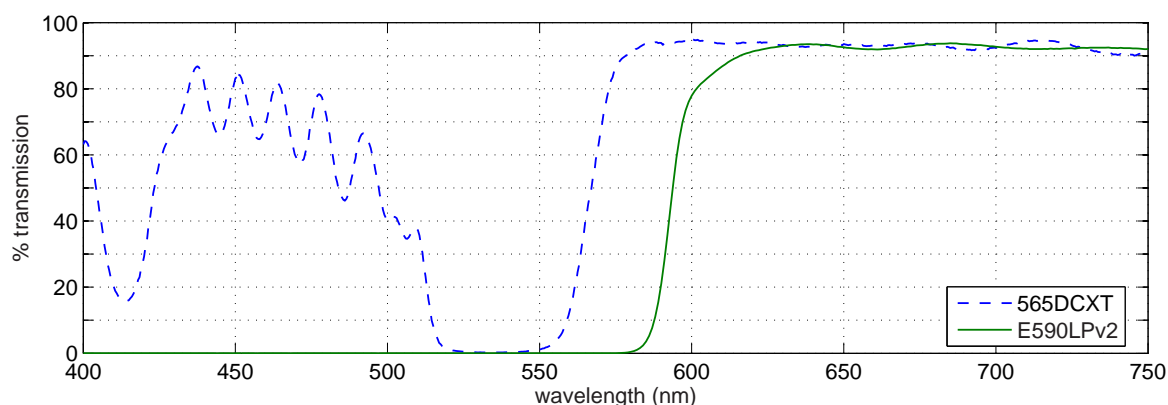


Figure 3: The transmission spectra for the 565DCXT dichroic and the E590LPv2 barrier filter.

dichroic mirror - Passes light of one wavelength, and reflects light of another. The transmission spectrum for our dichroics (the 565DCXT from Chroma Technology) is shown in Fig. 3.

barrier filter - This filter blocks a particular spectral region. Our barrier filter is the E590LPv2, also from Chroma Technology, and its spectrum is likewise shown below.

3.1.7 CCD camera

Unlike some microscopes you may be used to, the one we build will not have an eyepiece for direct visual observation. Instead, we observe and capture images directly with a Firewire-enabled CCD camera (DMK 21F04 from The Imaging Source). Its monochrome (black and white) sensor is 640×480 pixels, each of which is a square $5.6 \mu\text{m}$ on a side. Like the objective lenses, we have an adapter ring to attach the camera threads to the SM1 lens tube system.



The camera software is called IC Capture, and is run from the PC desktop. If the program gives an error and cannot find the connected camera, it may need to have its driver updated.

3.2 Construction guidelines

A basic microscope is essentially a 4-f system (sketched in Fig. 4, which we have discussed in lecture. The requirement of overlapping the focal points between the two lenses can sometimes be relaxed, but sometimes needs to be adhered to very precisely. Do some ray-tracing to determine when this is the case. Discuss with a lab instructor, if this is not clear.

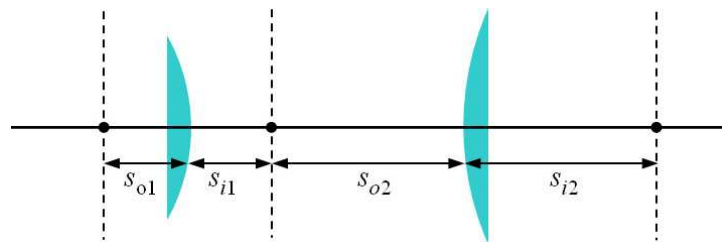


Figure 4: A 4-f lens system using lenses with focal lengths f_1 and f_2 . The object and image distances (s_o and s_i , respectively) for the lenses are indicated.

3.2.1 White light microscope

The microscope should be built in two stages: first, you'll assemble a white-light inverted microscope, verify its alignment and magnification, and then you will add the fluorescence branch.

First sketch out a rough design for the microscope on paper. Verify this with one of the lab instructors before beginning construction. Some hints and suggestions to help you with the layout and design process:

- A rough schematic of the microscope geometry is shown in Figure 1.
- The Nikon objective lenses are designed to be paired with a 200 mm tube lens, which gives the system the specified magnification.
- Since this is an inverted microscope, you'll want the objective pointing upward, with the sample sitting above it. Configure the microscope's geometry to avoid placing the entire optical path vertically under the sample mount.

- Assume that the objectives behave as ideal plano-convex lenses (this is what they are designed to do). Since an objective's working distance can be quite short, the ability to finely control its distance from the image is important. Mount your objective using a component that will allow you to make fine distance adjustments.
- Start the alignment with a 10× objective but progress to 40× and 100×.
- Use the gooseneck lamps to trans-illuminate the sample for white light imaging.
- Use a quick-connect for the CCD camera. This will make modification much more convenient for later construction stages.

3.2.2 Fluorescence microscope

As before, first sketch out a layout for adding fluorescence to the microscope and discuss it with your lab instructor. Adding fluorescence should require only a few modifications to your setup. Keep the following things in mind:

- Use the dichroic to direct the laser illumination toward the sample and to pass the emitted (fluorescent) light back through to the CCD.
- An adjustable iris aperture and some lens or tissue paper can be very helpful for aligning the laser and directing it along the axis of the tubes.
- The barrier filter is used to “condition” the image before it reaches the CCD camera, removing any light from the illumination laser that might have gotten through the dichroic.
- During actual fluorescent imaging, you will not use white light illumination, but having white light capability is useful for first visualizing the sample and viewing what features are in the field of view. You should retain the ability to do both white light and fluorescent visualization.

4 Experiment 1: Microscope Characterization and Fourier-Plane Imaging

4.1 White light calibration

Use this white light microscope to image the following samples using the three different objectives (10 \times , 40 \times , and 100 \times)

- The smallest line pair on the so-called “Air Force imaging target” test pattern.
- A slide of 4 μm latex spheres.
- Ronchi ruling – a periodic pattern containing 600 line-pairs per mm. (only use 40 \times and 100 \times objectives for this; why?)

Can you see all these samples? What is the magnification of the microscope and the size of its field of view? Is it what you expected?

4.2 Fluorescence characterization and imaging

You have the following samples available for imaging using both 40 \times and 100 \times objectives:

- (a) A solution slide of Rhodamine 6G (Rh6G) solution, used to adjust the microscope for uniform illumination (this has its excitation peak at 530nm, and a fairly broad band of emission above 550nm).
- (b) A sample slide with 4 μm red-fluorescent beads (modified with Nile Red dye, peak excitation at 535nm, peak emission at 575nm).

Imaging tasks:

1. Use the Rh6G slide to optimize the uniformity of the illumination field (you want the light distribution hitting the sample to be as uniform as possible). Take an image of this.
2. Measure the signal level while imaging Rh6G - try to achieve maximal uniformity and brightness.
3. Image the red beads slide. Perform flat field correction on the beads (i.e. divide the bead image by the normalized Rh6G image). Compare what you see before and after flat field correction. *If the images are noticeably different, especially at 40 \times (i.e. there is significant non-uniformity in the illumination field), you should improve the scope's alignment until there isn't much difference.*

4.3 Fourier optics

Recall from lecture that a lens behaves as a Fourier transformer. When an object is placed at a plane one focal length away from the lens, an image of the object's spatial frequencies is formed one focal length away on the other side (called the Fourier plane). Likewise a Fourier transform projected through a lens generates the corresponding image (see Figure 5).

4.3.1 The “light-scattering microscope”

Here we'll investigate the Fourier transforming properties of our microscope. This capability is employed in a type of microscopy called Dynamic Light Scattering (DLS), which can be used, for example, to quantify the presence of regular patterns or measure average sizes of features being imaged.

To modify your microscope for imaging the Fourier plane, simply add a lens at the plane one focal length behind the image plane and position the CCD camera one focal length behind the lens. (A 50 mm lens is good – it will keep the beam path short, though the exact focal length is not critical.) Here, a pair of quick-connects will play a key role, letting you quickly switch between capturing the image plane and the Fourier plane on the CCD.

To characterize the Fourier-imaging ability of your microscope, we'll use the Ronchi ruling, illuminated by the laser. Its spatial frequency components can be readily imaged at the Fourier plane.

Before doing the experiment, estimate how many diffraction orders you can observe with the 40× and 100× objectives (which have $NA = 0.65$ and $NA = 1.3$ respectively)?

The general equation describing the optical geometry of a diffraction grating is

$$a(\sin \theta_m - \sin \theta_i) = m\lambda,$$

where θ_i (the incident beam angle) and θ_m (the diffraction angle) are measured with respect to the normal, a is the grating period, m is the diffraction order number, and λ is the light wavelength.

What is the incident angle of your experiment? What is the maximum diffraction angle allowed by your apparatus? How is θ_m related to the numerical aperture of the objective lens? Recall that $NA = n \sin \theta$, where n is the index of refraction of the medium. For air $n = 1$ and for oil $n = 1.5$.

Now, view the Fourier plane images of the Ronchi ruling with the 40× and 100× objective lenses to verify your calculations.

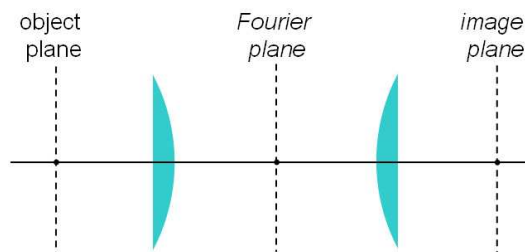


Figure 5: A lens system with unity magnification, showing the relative locations of image and Fourier planes.

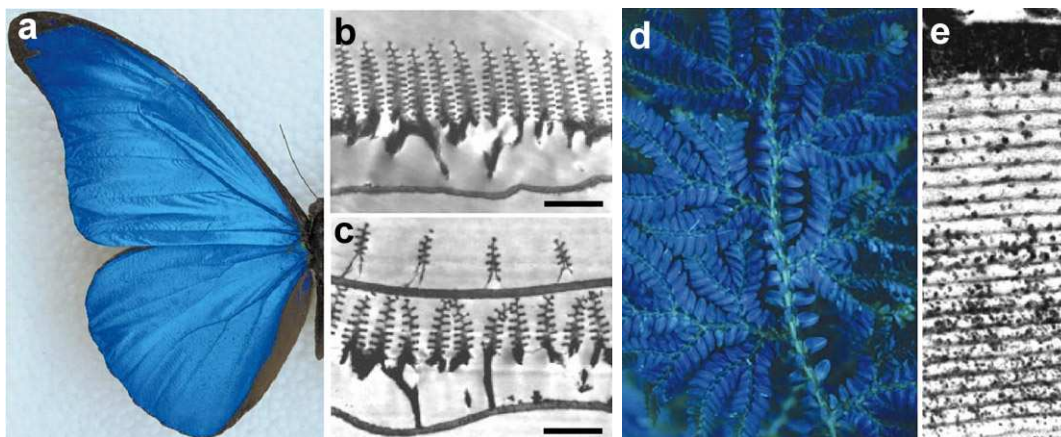


Figure 6: [Images and caption reproduced from Vukusic and Sambles] (a) Real color image of the blue iridescence from a *Morpho rhetenor* wing. (b) Transmission electron micrograph (TEM) images showing wing-scale cross-sections of *M. rhetenor*. (c) TEM images of a wing-scale cross-section of the related species *M. didius* reveal its discretely configured multilayer. The high occupancy and high layer number of *M. rhetenor* in b creates an intense reflectivity that contrasts with the more diffusely colored appearance of *M. didius*, in which an overlying second layer of scales effects strong diffraction. Scale bars: (a) 1 cm, (b) $1.8 \mu\text{m}$, (c) $1.3 \mu\text{m}$. (d) Blue iridescence is prevalent in the fern-like tropical understory plants of the genus *Selaginella*. (e) TEM section of a juvenile leaf from the plant *Diplazium tomentosum*.

4.3.2 Bio-photonic crystals

Many biological systems in nature have interesting optical properties (please see the fascinating review¹ recently published in *Nature*). Some researchers have advocated using biological system to “grow” photonic crystals. Today, photonic crystals made by microlithography have been used to guide light in optoelectronic systems and for optical computing. If photonic crystals can be self-assembled using biological systems, this may become a new low-cost and high-throughput manufacturing approach.

You are provided with two samples. (1) A peacock feather and (2) a piece of tissue paper. Obtain the diffraction pattern from both samples using the 100× objective. Now remove the lens that generates the Fourier plane, and obtain a real image of both specimens. Can you explain the diffraction patterns observed (quantitatively)? Do either of these samples exhibit the properties of photonic crystals?

If this subject interests you, take a look at the additional references listed in the footnotes.^{2,3}

¹P. Vukusic and J. R. Sambles, “Photonic structures in biology,” *Nature*, **424**, pp. 852-855, (2003).

²R. Prum and R. Torres, “A Fourier Tool for the Analysis of Coherent Light Scattering by Bio-Optical Nanostructures”, *Integr. Comp. Biol.*, **43** pp. 591-602 (2003)

³<http://www.physicstoday.org/vol-57/iss-1/p18.html>

5 Experiment 2: Microrheology Measurements by Particle Tracking

5.1 Introduction and background

Many cellular functions such as migration, differentiation, and proliferation are regulated by the mechanical properties of cells, specifically, their elasticity and viscosity. Rheology is the science of measuring materials' mechanical properties. Microrheology is a subgroup of techniques that are capable of measuring mechanical property from microscopic material volumes. Clearly, given the typical size of biological cells, microrheology is the technique needed to measure their elasticity and viscosity.

The elastic and viscous properties of cells can be characterized by a complex-valued shear modulus (with units of Pa) $G^*(\omega) = G'(\omega) + iG''(\omega)$. The real part $G'(\omega)$, referred to as the storage modulus, is a measure of cell elasticity, while the imaginary part $G''(\omega)$, the loss modulus, is a measure of their viscosity. A generalized Hookian relationship can be written as

$$F(\omega) \propto G^*(\omega)\Delta r(\omega) ,$$

where $\Delta r(\omega)$ is a generalized displacement, and $F(\omega)$ is a force linearly proportional to it via the shear modulus. Therefore, we can measure the shear modulus if we can measure the deformation of the cell under a known force. (Note that all these quantities are frequency-dependent).

Particle-tracking microrheometry is based on measuring the displacement of a particle with radius a embedded in a cell driven by thermal forces (similarly to the vibrations of the cantilever that you observed in the AFM lab). One complication is that this relationship is frequency dependent – this is because in complex fluids, such as the cellular cytoskeleton, there are different energy dissipation mechanisms over different time scales.

To approach the derivation of the relevant formulas, it is more convenient to think in terms of energy, rather than force. The relationship between stored energy and displacement has a familiar form, similar to a spring-mass system (recall $KE \propto k(\Delta z)^2$):

$$U(\omega) = \int F(\omega)dr \propto G^*(\omega)\Delta r^2(\omega) .$$

What is the driving thermal energy $U(\omega)$? Recall also from that thermal energy is “white,” i.e., it contains equal power at all frequencies and is equal to $\frac{1}{2}k_B T$ for each degree of freedom in a second-order system, where k_B is Boltzmann's constant and T is the absolute temperature. From this relationship (since we're observing motion in two dimensions), we have

$$G^*(\omega) \propto \frac{k_B T}{\Delta r^2(\omega)} .$$

Our argument is clearly very rough but a complete (and much more difficult) derivation results in the following equation (see Mason⁴ for details):

$$|G^*(\omega)| = \frac{2k_B T}{3\pi a \langle \Delta r^2(\omega) \rangle \Gamma[1 + \alpha(\omega)]}$$

Some key additional details to help you make sense of this equation:

⁴T. G. Mason, “Estimating the viscoelastic moduli of complex fluids using the generalized Stokes-Einstein equation” *Rheol. Acta*, **39**, pp. 371-378 (2000).

1. As you can see, the dependence on displacement is more accurately expressed as the mean-square displacement (MSD) $\langle \Delta r^2(\omega) \rangle$:

$$\text{MSD} = \langle \Delta r^2(\omega) \rangle = \langle \Delta r^2(\frac{2\pi}{\omega}) \rangle = \langle [r(t + \tau) - r(t)]^2 \rangle = \frac{1}{N} \sum_{i=1}^N [r(t_i + \tau) - r(t_i)]^2 ,$$

where $\langle \rangle$ denotes a time-average of the particle's displacement trajectory $r(t)$, at discrete times $t = t_1, \dots, t_n$ (as sampled by a digital system like the PC and camera). Additionally, τ is a characteristic lag/delay time for the measurement. corresponding to the frequency ω .

- 2.

$$\alpha(\omega) \equiv \left. \frac{\partial \ln \langle \Delta r^2(\tau) \rangle}{\partial \tau} \right|_{\tau=2\pi/\omega} .$$

3. The radius of the particle a plays a role in the formula.
4. $\Gamma(\cdot)$ is the Gamma function (the generalized form of the factorial function, which can be looked up in a mathematical table). Mason suggests that for our range of α , $\Gamma[1 + \alpha] \approx -0.457(1 + \alpha)^2 - 1.36(1 + \alpha) + 1.90$.

This equation may look complicated but there is a simple approximation to calculate the elastic and viscous moduli:

$$G'(\omega) = |G^*(\omega)| \cos[\pi\alpha(\omega)/2]$$

$$G''(\omega) = |G^*(\omega)| \sin[\pi\alpha(\omega)/2]$$

A detailed discussion of particle tracking microrheology can be found in the papers by Mason and Lau⁵.

5.2 Experimental details

5.2.1 Stability and setup

The major challenge of particle tracking microrheometry is the small scale of the thermal forces and the associated nanometer scale displacements. A few things you can do to ensure the experiment works:

Be sure all the microscope components are rigidly assembled and firmly tightened. Poorly built scopes shake. It is also vital that when you perform this experiment that the optical tables are floating so that building noise is isolated. Of course, avoid touching the optical table and the microscope during the measurement. There are also cardboard boxes available that you can put over your microscope to isolate it from air currents. Finally, make sure that you and the people around you are not talking too loudly during the experiment, because acoustic noise is significant.

The camera gain and brightness setting should be set as described in Figure 7.

⁵A. W. C. Lau *et al.*, "Microrheology, Stress Fluctuations, and Active Behavior of Living Cells," *Phys. Rev. Lett.*, **91**(19), p. 198101 (2003)

5.2.2 System verification

To verify that your system is sufficiently rigid/stable, first measure a specimen containing 1 m red fluorescent beads (Molecular Probes) dried in a cell dish. Chose a field of view in which you can see at least 3-4 beads. Using a 40 \times objective record an .avi movie for about 3 min. at a frame rate of 30 frames/sec.

From your experience with image processing, you already know how to import .avi movie data into MATLAB. To improve signal to noise ratio, sum every 30 frames together, which will make your sequence have a temporal interval of 1 sec.

Use the bead tracking processing algorithm on two beads to calculate two trajectories. To further reduce common-mode motion from room vibrations, calculate the differential trajectory from the individual trajectories of these two beads. Calculate the MSD $\langle \Delta r^2 \rangle$ from this differential trajectory. Your MSD should start out less than 10 nm² at $\tau = 1$ sec. and still be less than 100 nm² for $\tau = 180$ sec. If you don't get this, do not proceed further and ask for help.

5.2.3 Live cell measurements

Now that your system is sufficiently stable, you can run the experiment on cell samples. A key technique to keep in mind when working with live cells – to avoid shocking them with “cold” at 20°C, be sure that any solutions you add are pre-warmed to 37°C. We will keep a warm-water bath running on the hotplate for this purpose, in which we will keep the various media.

You are provided with NIH 3T3 ibroblasts, which were prepared as follows:

Cells were cultured at 37°C in 5% CO₂ in standard 100 mm \times 20 mm cell culture dishes

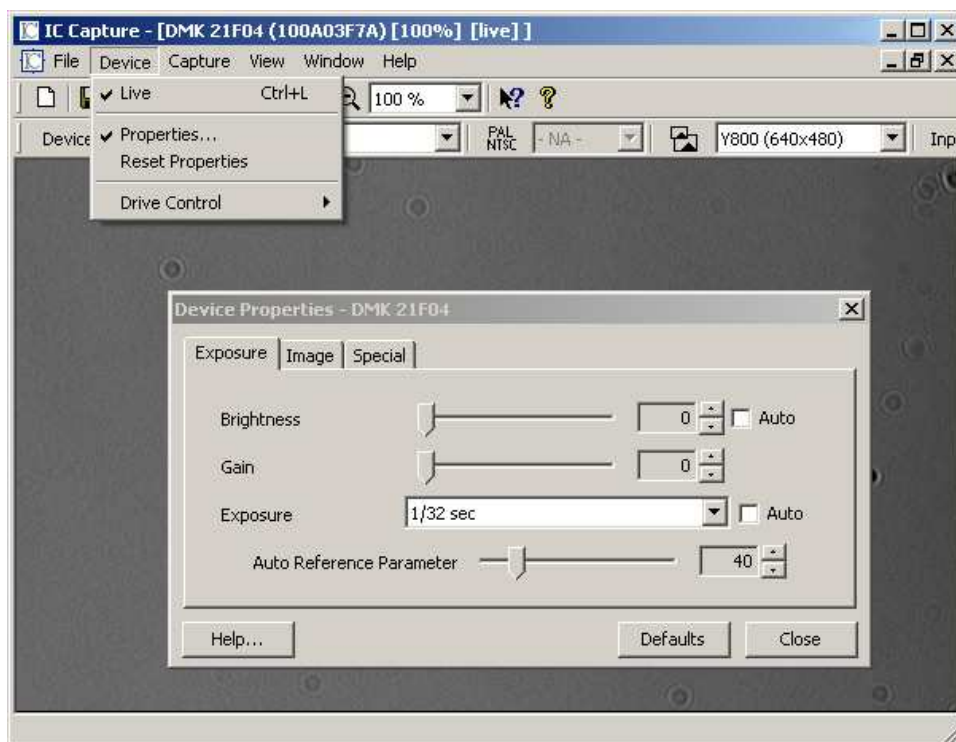


Figure 7: Proper camera gain settings for particle tracking: Choose “Properties...” under the “Device” menu and set the gain and brightness level to zero. Change the exposure time until the intensity of the fluorescent beads is just high enough to achieve good contrast, but do not saturate the intensity value to 255.

(Corning) in a medium referred to as **DMEM++** – this consists of DMEM (Cellgro) supplemented with 10% fetal bovine serum (FBS - from Invitrogen) and 1% penicillin-streptomycin (Invitrogen). The day prior to the microrheology experiments, fibroblasts were plated on 35 mm glass-bottom cell culture dishes (MatTek). On the day of the experiments, the cell confluency should reach about 60%. $1\ \mu\text{m}$ diameter orange fluorescent microspheres (Molecular Probes) were mixed with the growth medium (at a concentration of 5×10^5 beads/mL) and added to the plated cells for a period of 12 to 24 hours for bead endocytosis. Choose cells with 3 or 4 particles embedded in them and take a movie as before. Take movies of about 3-5 cells.

Now treat the cell with the cytoskeleton-modifying chemical cytochalasin D (CytoD). Pipet out the buffer, add 1 mL CytoD solution at $10\ \mu\text{M}$ (pre-mixed for you) to the dish, and wait for 20 min. It's a good idea to check on your cells after 20 min.: sometimes they are in bad shape at that point but sometimes they still look very healthy. Wash and replace with buffer twice with 2 mL pre-warmed DMEM++.

Repeat the particle tracking measurements again for 3-5 cells as quickly as you are able, since their physiology has now been significantly disrupted and they will die within a couple of hours. It's very unlikely that you'll be able to find the exact same cells you've already tracked; however it's very much advisable to use the same dish for the “before” and “after” so you're aren't also comparing between different cell populations.

6 Experiment 3: Fluorescence Imaging of the Actin Cytoskeleton

We have now observed CytoD-induced rheological changes of 3T3 fibroblasts. This next experiment seeks to better understand the effect of CytoD on cells. Since there are significant rheological changes of 3T3 fibroblast with CytoD, it is reasonable to assume that this chemical may modify the fibroblast cytoskeleton. The most important component of the mammalian cell cytoskeleton is actin, so we will image actin structures in these cells with and without CytoD treatment.

The actin cytoskeleton is visualized using phalloidin labeled with Alexa Fluor 532. The excitation maximum is at about 535nm and emission maximum is at about 575nm (see spectra in Fig. 8). Phalloidin is a fungal toxin (small organic molecule) that binds only to polymerized filamentous actin (F-actin), but not to actin monomers, G-actin. (It is a toxin because it hinders actin disassembly).

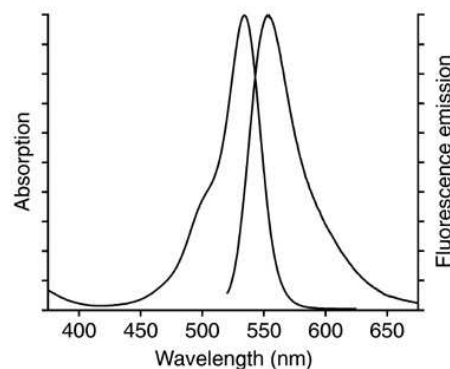


Figure 8: Excitation and emission spectra for Alexa Fluor 532.

6.1 Cell fixation and labeling protocol

Prepare a dish of fixed fibroblast cells (NIH 3T3) with actin labeled with phalloidin-Alexa Fluor 532. The labeling protocol is as follows:

The starting point is as before – cells cultured in dishes containing DMEM++, at approximately 60% confluency. This is about the optimum percentage of cell population. If cells are too crowded, they will not stretch properly and show their beautiful actin filaments.

Note also that these cells remain alive until the addition of formaldehyde, therefore requiring that any buffer/media added to be pre-warmed.

1. Pre-warm the 3.7% formaldehyde solution in a hot water bath on the hotplate.
2. Wash the cells twice with pre-warmed phosphate buffered saline (PBS) at pH 7.4.
 - Remove the medium with a pipette and wash each dish twice with 2 mL of PBS.
3. Fix the samples with 2 mL of 3.7% formaldehyde solution in PBS for 10 minutes at room temperature.
 - “Fixing” means cross-linking the intracellular proteins and freezing the cell structure. This kills the cells.
4. Wash the cells three times with 2 mL PBS.
5. Extract each dish with 2 mL 0.1% Triton X-100 (a type of soap solution in PBS) for 3-5 minutes.
 - “Extraction” refers to partially dissolving the plasma membrane of the cell.
6. Wash the cells 2-3 times with PBS.
7. Incubate the fixed cells with 2 mL 1% BSA (bovine serum albumin) in PBS for 20-30 minutes.
 - BSA blocks the nonspecific binding sites.
8. Wash cells twice with PBS.

9. To each cell dish, add 200 μL of fluorescent phalloidin solution (specific binding to F-actin) pre-mixed in methanolic (diluted methanol). Carefully pipet this just onto the central circular glass region of the dish, just enough to cover the cells, and incubate for 60 min. at room temperature.
10. Wash three times with PBS.
11. You can now store the sample at $+4^{\circ}\text{C}$ (normal refrigerator) in PBS for a few days, or in mounting medium for long-term storage (approx. up to 1 year).

By a very similar procedure, you should also prepare cells treated with CytoD. Between steps 2 and 3 of staining procedure, add 1 mL of the pre-warmed 10 μM CytoD solution for 20 min. Afterwards, wash with DMEM++ twice.

6.2 Actin imaging

Since actin filaments and stress fibers are nm-scale objects, they are much dimmer than fluorescent beads or the dye solution – care must be taken to get good images of the cytoskeleton. You may need to cover the scope to reduce room light contamination.

Adjust the gain and the brightness of the camera to get the best picture. Be sure to keep the same exposure conditions, however, for both untreated and treated cells.

Using the 40 \times objective, take five images each of treated and untreated cells. You may have to average multiple captured image frames to obtain acceptable signal to noise levels.

7 Report Requirements

This lab report is due by 12:00 noon (in class) on Thursday, Nov. 30.

7.1 Microscope construction

Make a sketch of your full microscope setup (a hand drawing is perfectly acceptable, but please keep it neat - a ruler is handy) with important parameters indicated (i.e. lens focal lengths, distances of main components, etc.).

7.2 Experiment 1: microscope characterization and Fourier-plane imaging

1. Include your favorite 2-3 white-light images, indicating the magnification and field of view (do they match what was expected?).
2. Include an uncorrected and a flat-field-corrected fluorescent image of the 4 μm beads.
3. Calculate the diffraction-limited resolution for the 10 \times , 40 \times and 100 \times objectives, and how this compares with which samples each objective could or could not resolve.
4. Include both the real and Fourier-plane images of the peacock feather and tissue paper, and quantitatively describe how they relate to each other?

7.3 Experiment 2: microrheology measurements by particle tracking

Analyze the bead trajectories for the normal and CytoD-treated cells. Extract their MSD $\langle \Delta r^2 \rangle$, and the G' and G'' modulus values, and include enough detail to make it clear how you performed the analysis.

Do you get consistent results across multiple cells in each group? What can you tell about the effect of CytoD on the mechanical properties of these cells?

7.4 Experiment 3: fluorescence imaging of the actin cytoskeleton

Include one or two of your favorite actin cytoskeleton images from each of the CytoD treated and untreated cell groups. Use your image processing knowledge to optimize image quality.

Apply the algorithms you developed during the image processing lab to quantify the degree of “fiberness” of the actin structures with and without CytoD. As in Experiment 2, what can you say about the effect of CytoD on these cells? Discuss whether the results of this experiment and the microrheology experiment are consistent with each other?

Bonus (optional)

You’ve now used two different optical microscopy methods to study the effects of cytochalasin D on NIH 3T3 fibroblasts. Hopefully, as you were working, many questions arose in your mind about different cell properties, their underlying physics, experimental conditions, etc.

For bonus credit, think about and propose any other experiments you might like to do (using these microscopes, or the AFMs, or any other approach you like) to study any related questions of cytoskeletal mechanics, microrheology, fluorescent labeling, etc. This is not a formal grant proposal – simply outline the question you’d like to answer and suggest an approach/method/technique that you could use to test it.